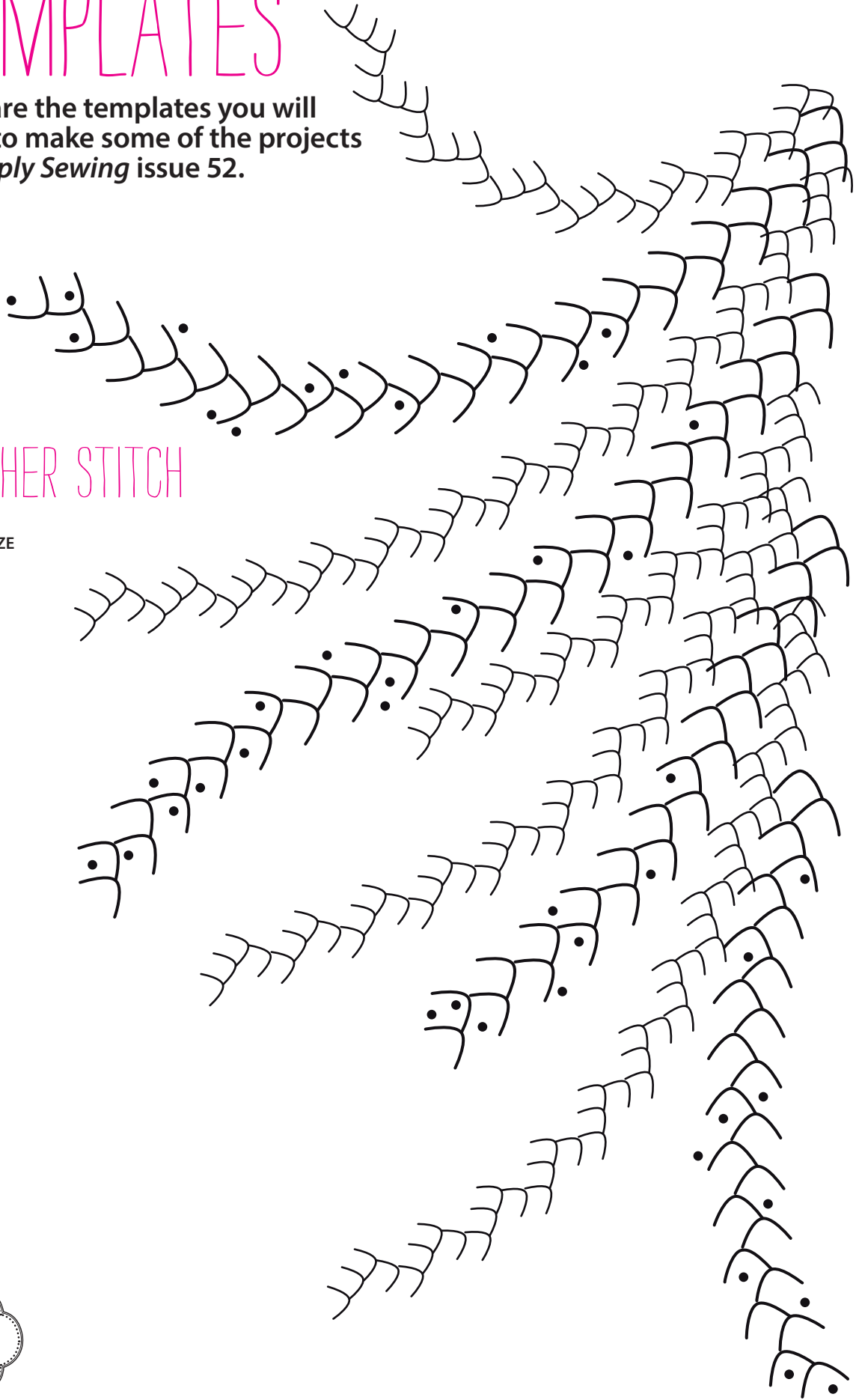


# TEMPLATES

Here are the templates you will need to make some of the projects in *Simply Sewing* issue 52.

## FEATHER STITCH

PAGE 49  
ACTUAL SIZE

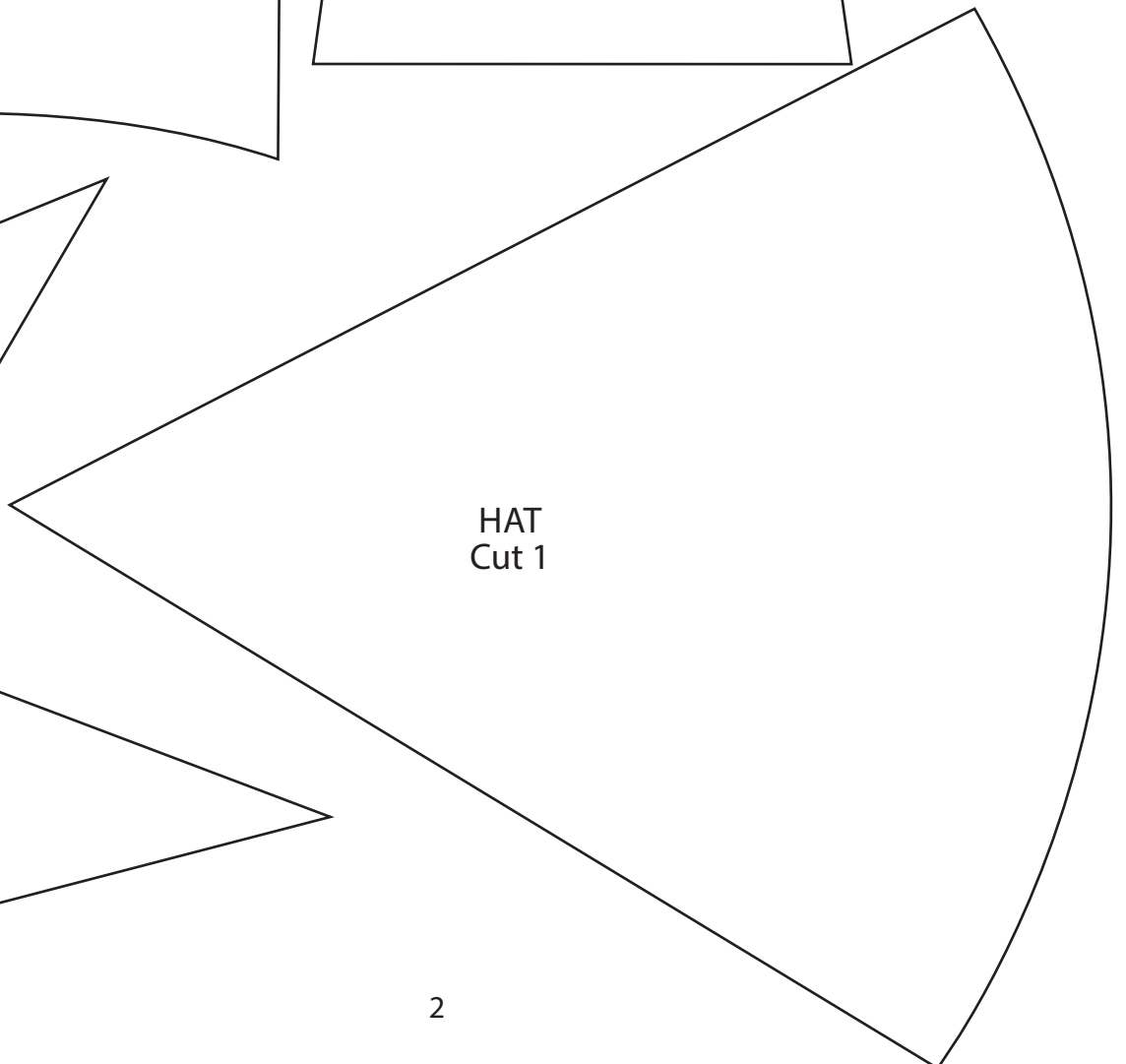
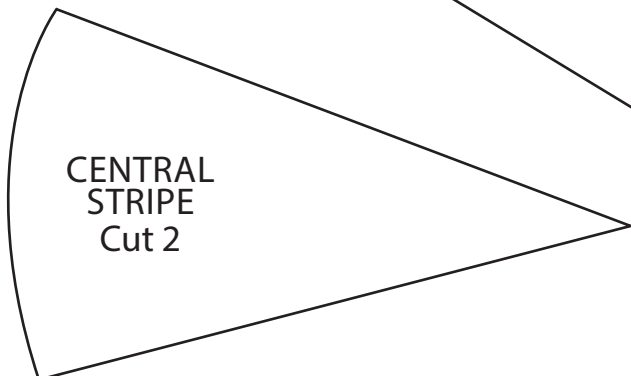
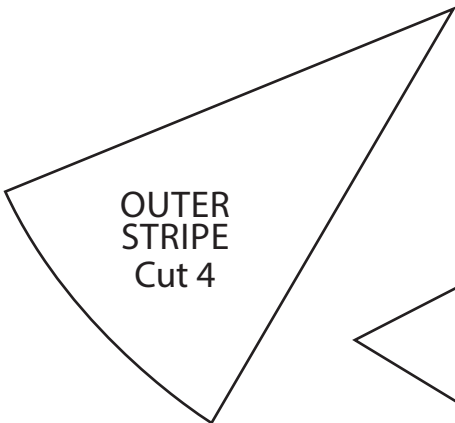
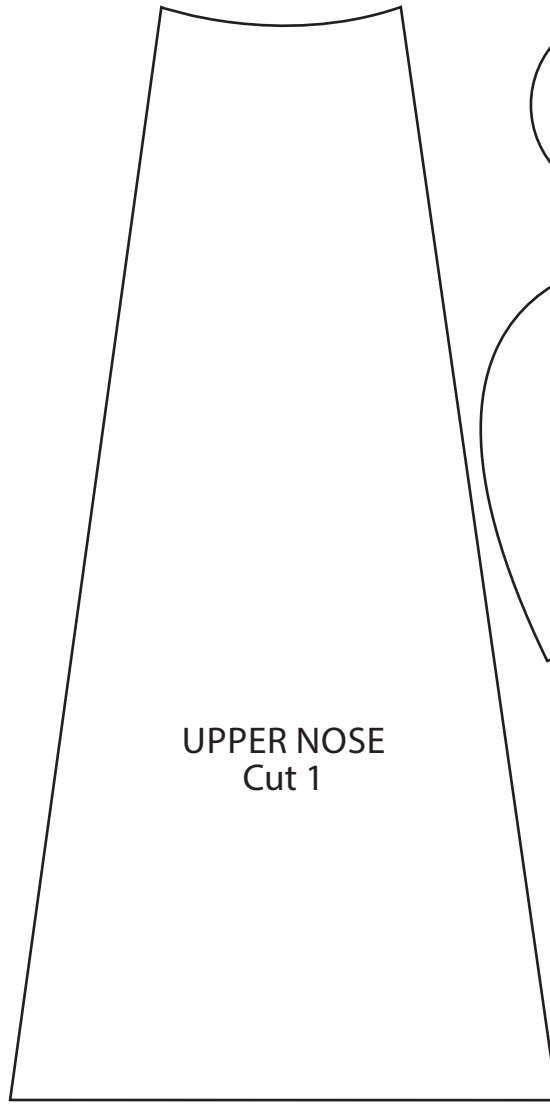
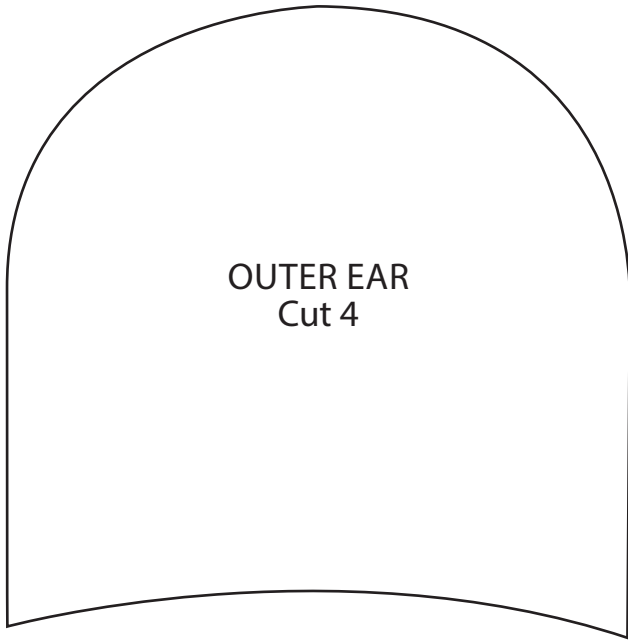
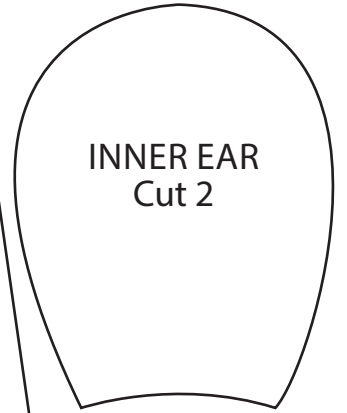
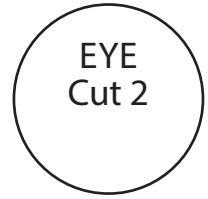
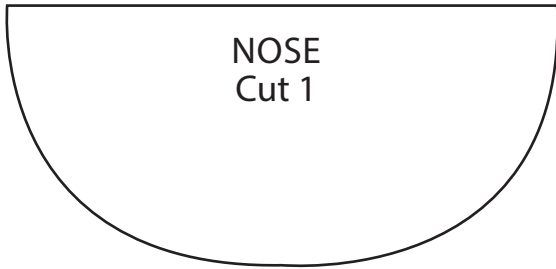


Thank you for making these projects from *Simply Sewing*. The copyright for these templates belongs to the designer of the project. They work hard to create projects for you to enjoy, so please don't re-sell or distribute their work without permission. Please do not make any part of the templates or instructions available to others through your website or a third party, or copy it multiple times without our permission. Copyright law protects creative work and unauthorised copying is illegal. We appreciate your help.

# TIGER CUSHION

PAGE 75

ACTUAL SIZE



CHHOOSSE

hroppy

# TIGER CUSHION

PAGE 75

ACTUAL SIZE

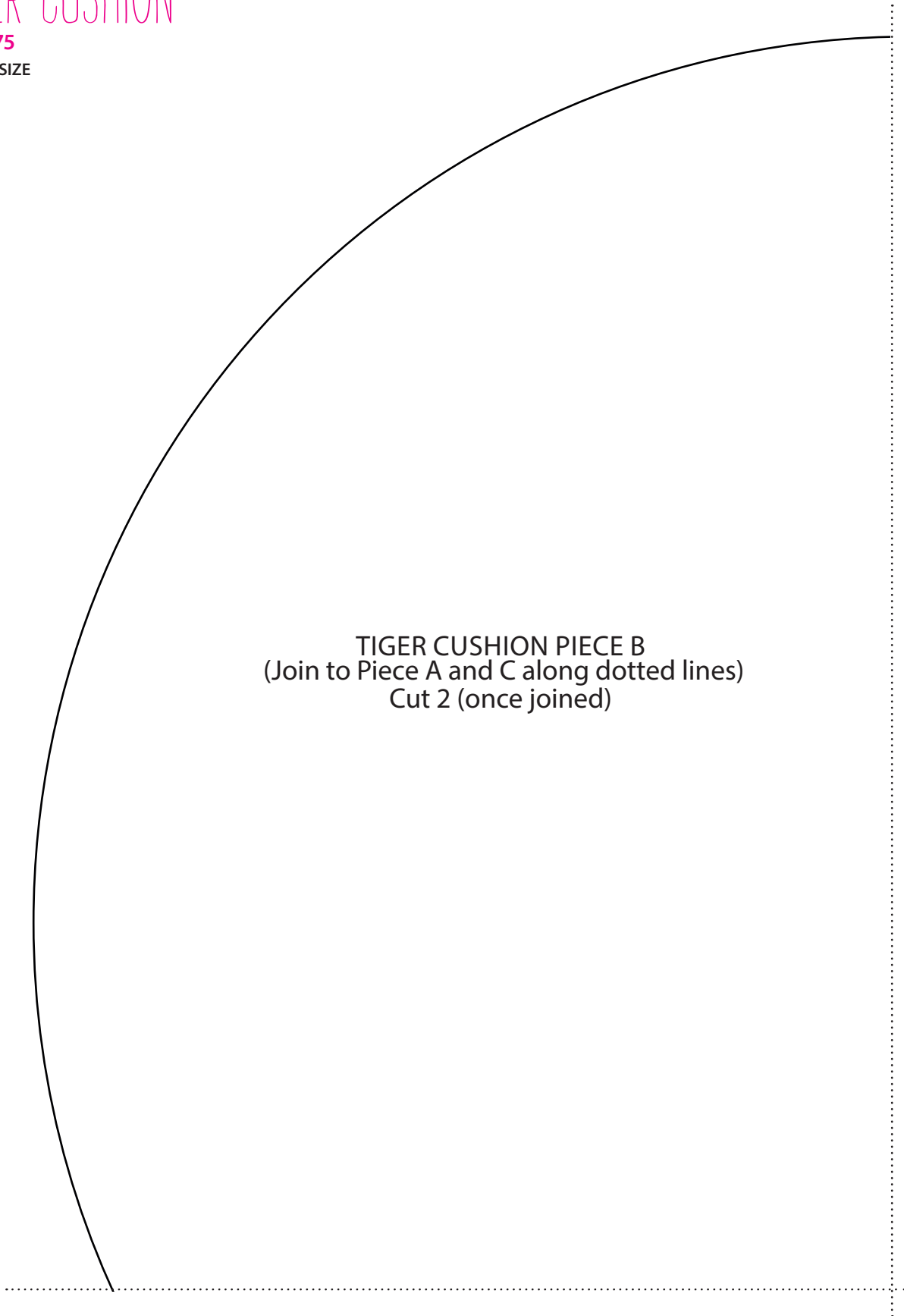


TIGER CUSHION PIECE A  
(Join to Piece B and C along dotted lines)  
Cut 2 (once joined)

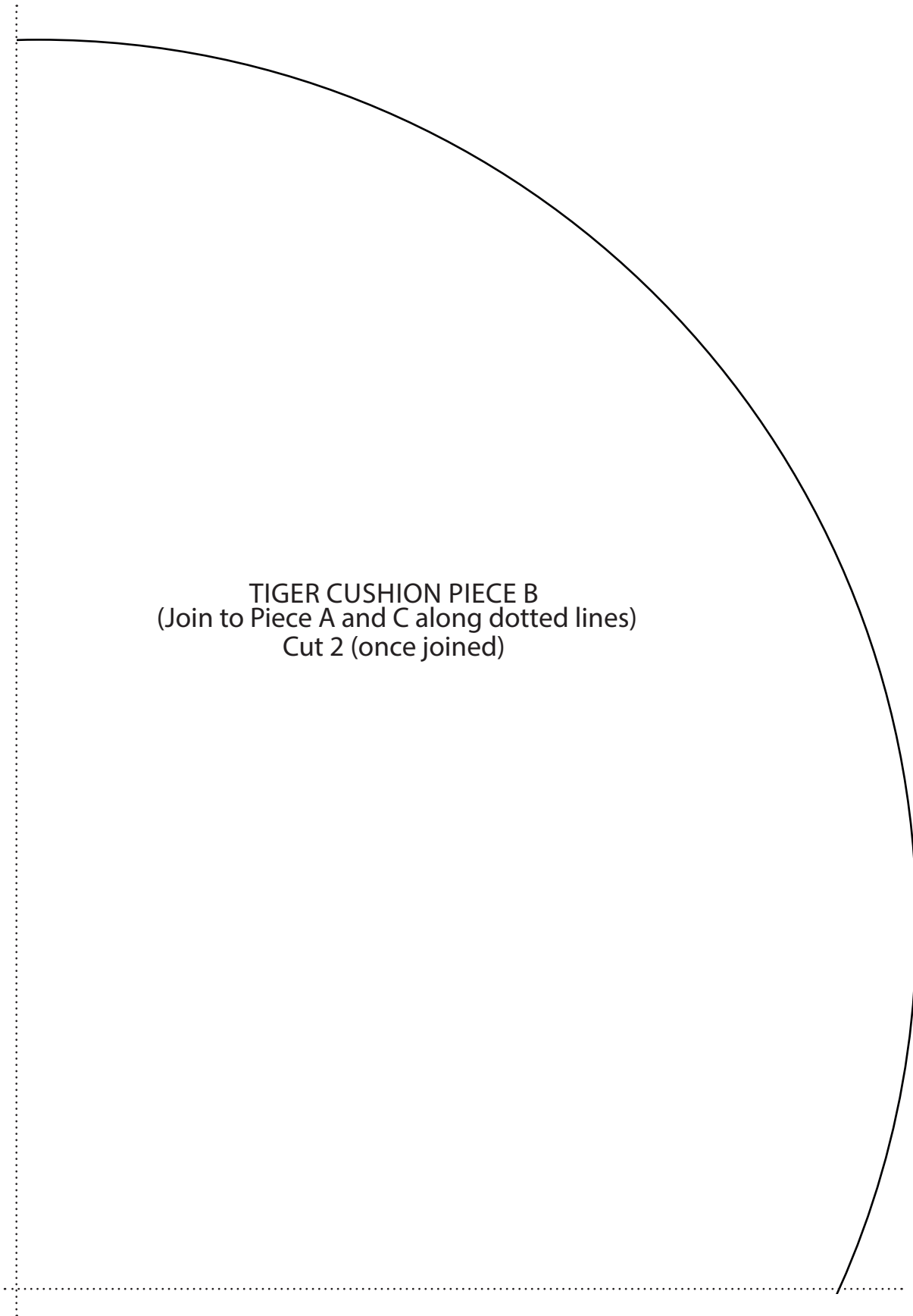
# TIGER CUSHION

PAGE 75

ACTUAL SIZE



TIGER CUSHION PIECE B  
(Join to Piece A and C along dotted lines)  
Cut 2 (once joined)



TIGER CUSHION PIECE B  
(Join to Piece A and C along dotted lines)  
Cut 2 (once joined)

# SLIPPERS

PAGE 26

ACTUAL SIZE

Placement points for slipper slides (top)

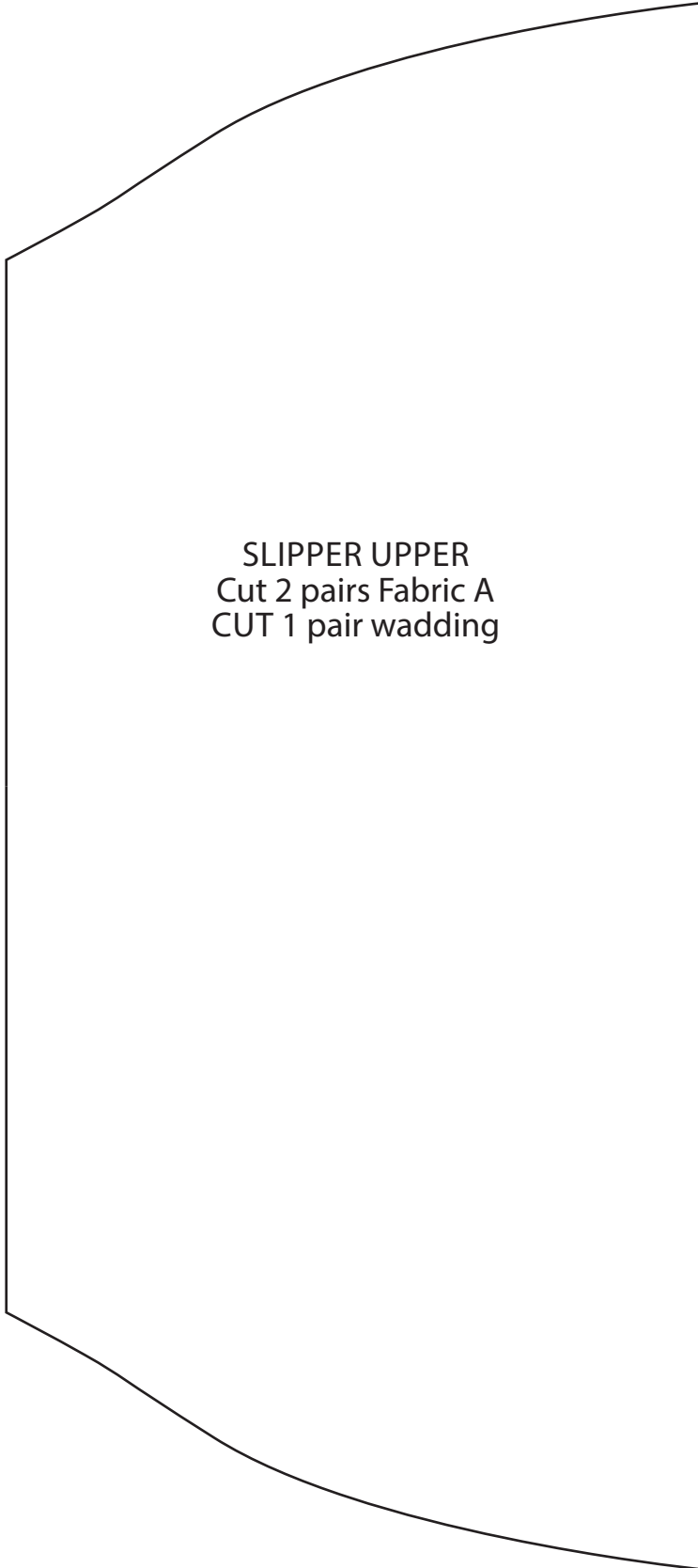
SLIPPER SOLE LEFT FOOT  
(Flip over for right foot)  
Inner sole: Cut 1 pair Fabric A  
Sole: Cut 1 pair Fabric B  
Sole wadding: Cut 1 pair wadding

Shorten or lengthen here

# SLIPPERS

PAGE 26

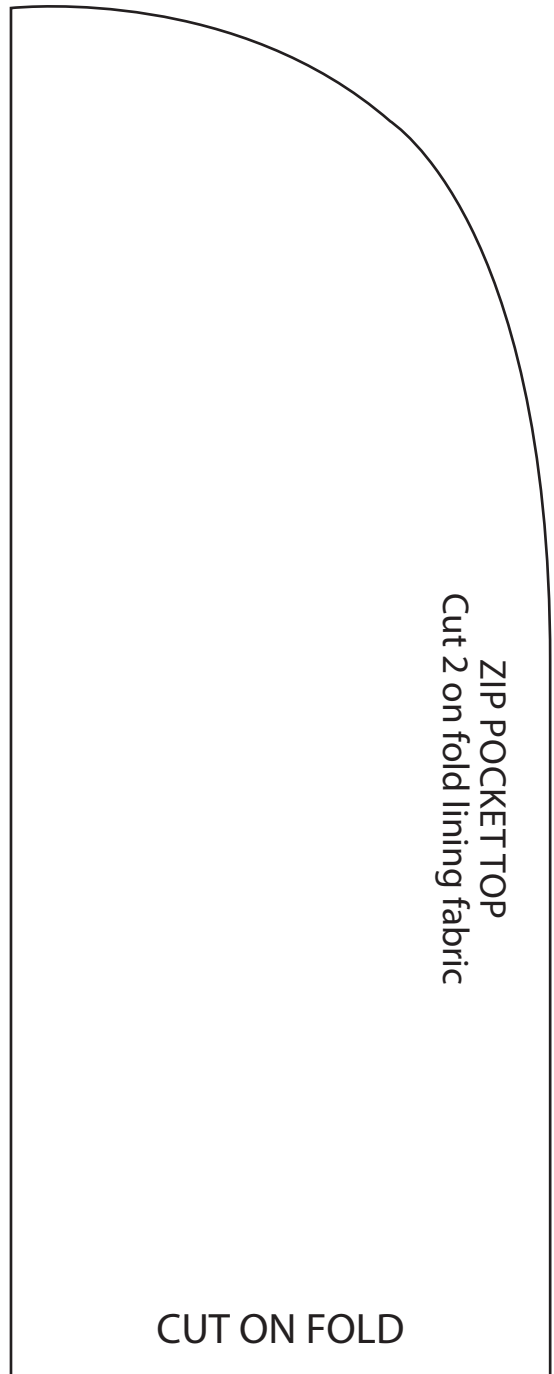
ACTUAL SIZE



# SEWING CASE

PAGE 83

ACTUAL SIZE

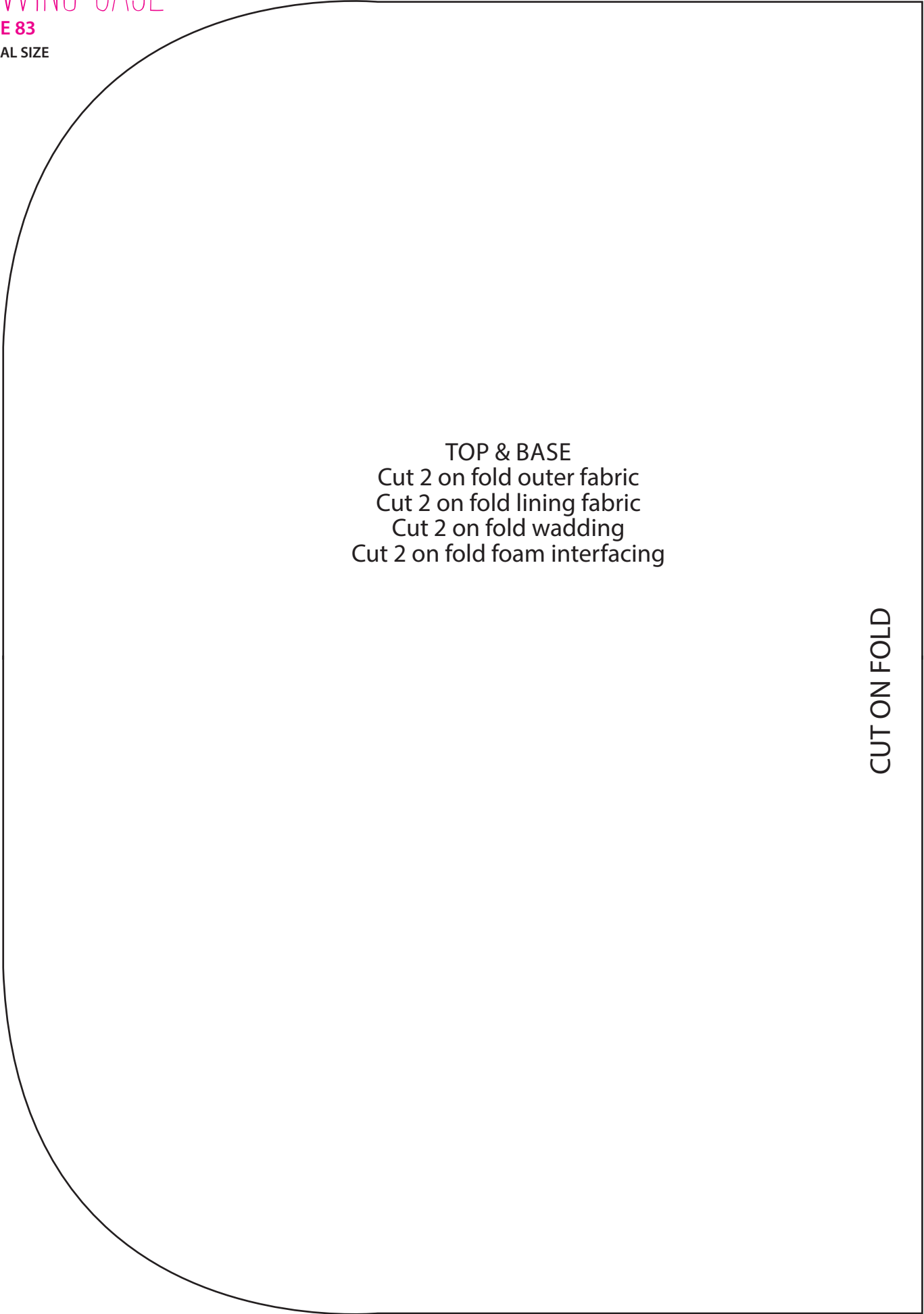




# SEWING CASE

PAGE 83

ACTUAL SIZE



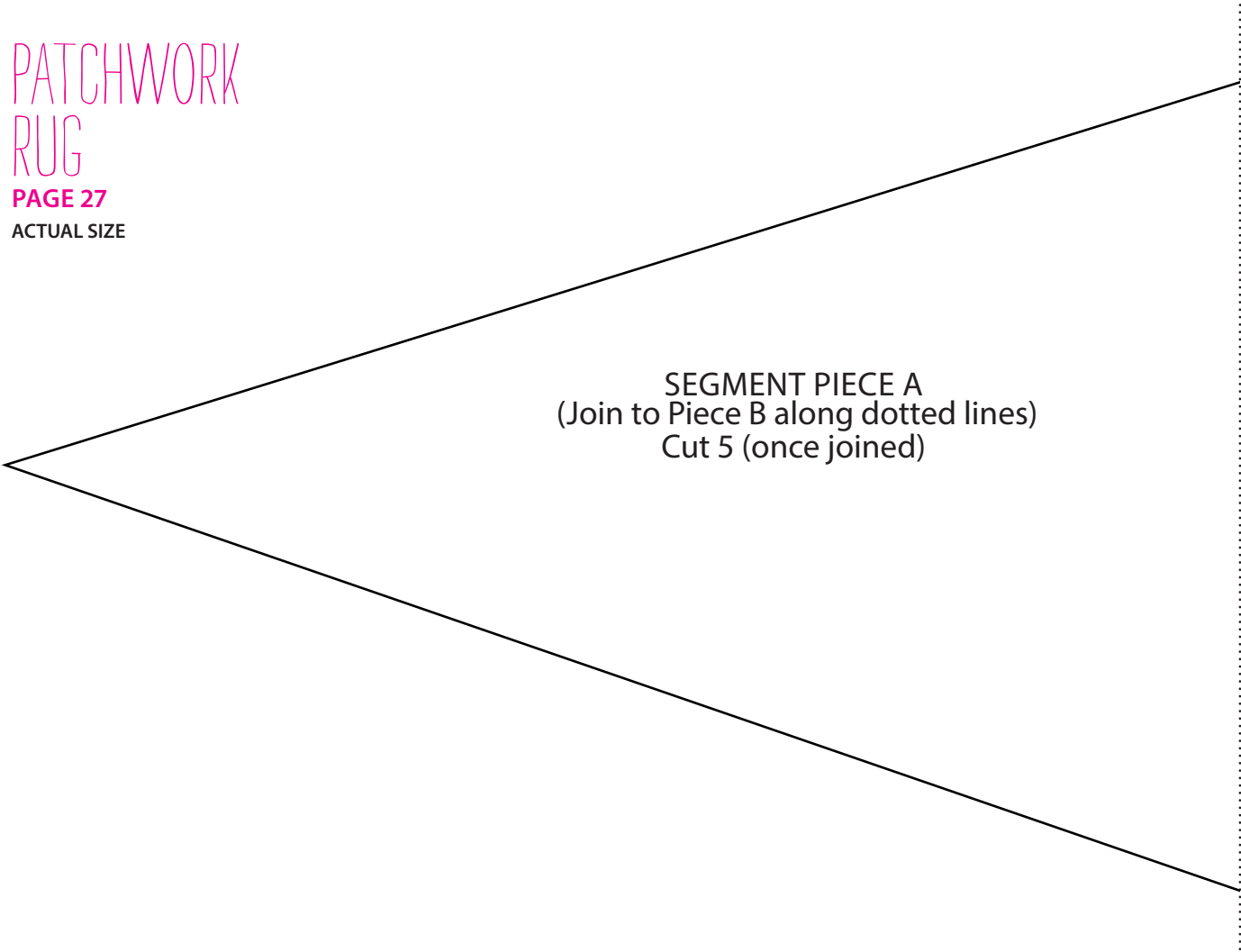
TOP & BASE  
Cut 2 on fold outer fabric  
Cut 2 on fold lining fabric  
Cut 2 on fold wadding  
Cut 2 on fold foam interfacing

CUT ON FOLD

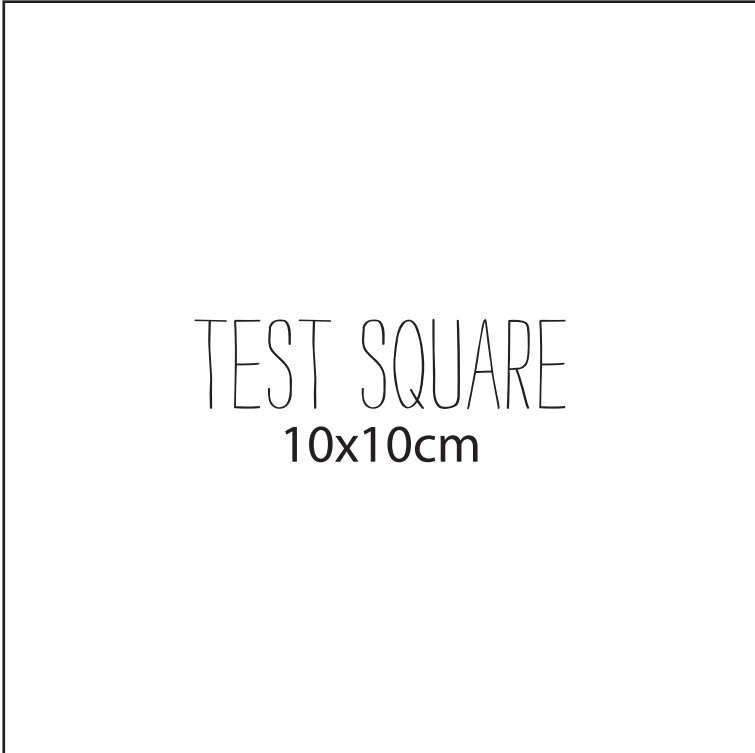
PATCHWORK  
RUG

PAGE 27

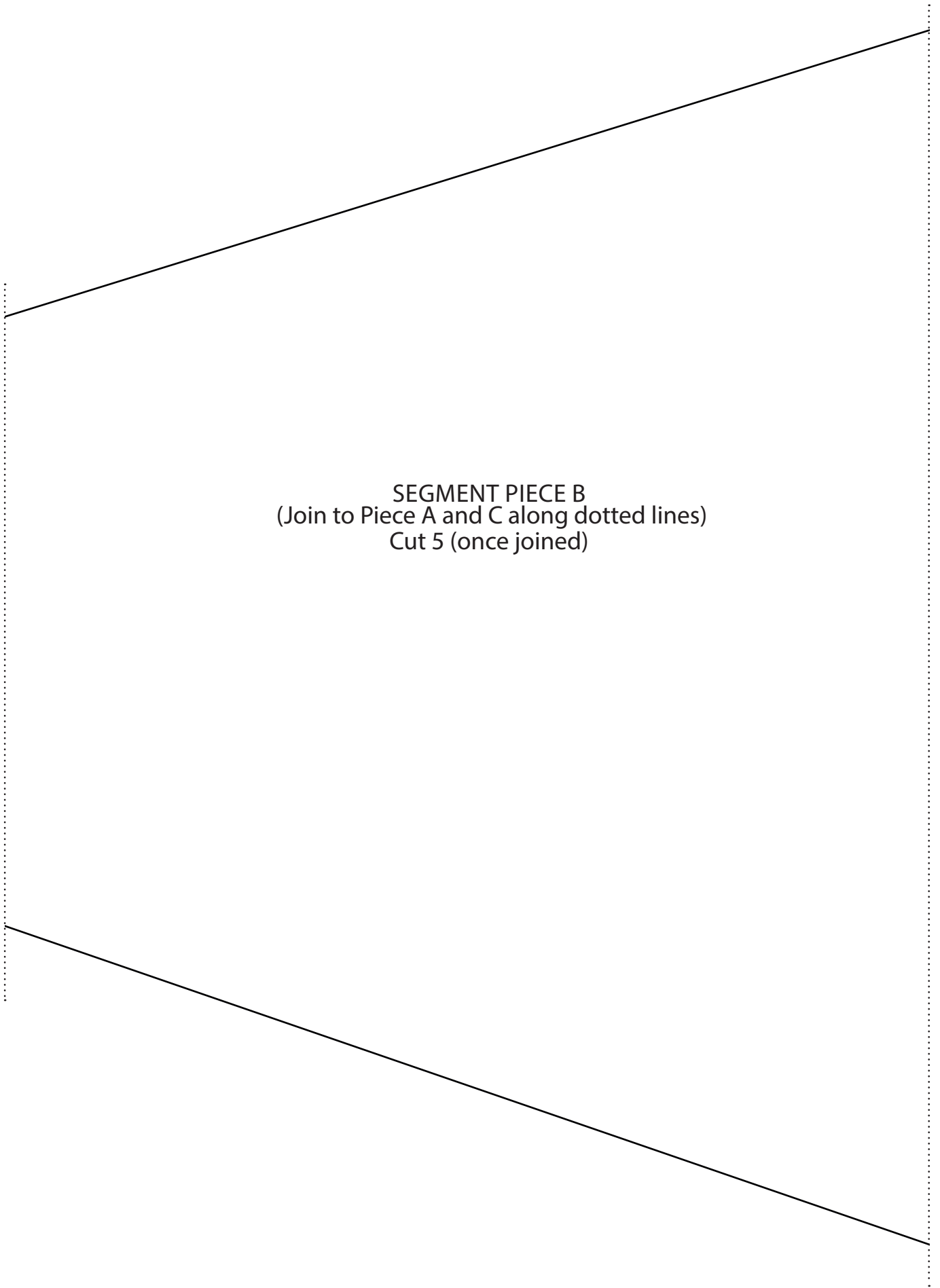
ACTUAL SIZE



SEGMENT PIECE A  
(Join to Piece B along dotted lines)  
Cut 5 (once joined)



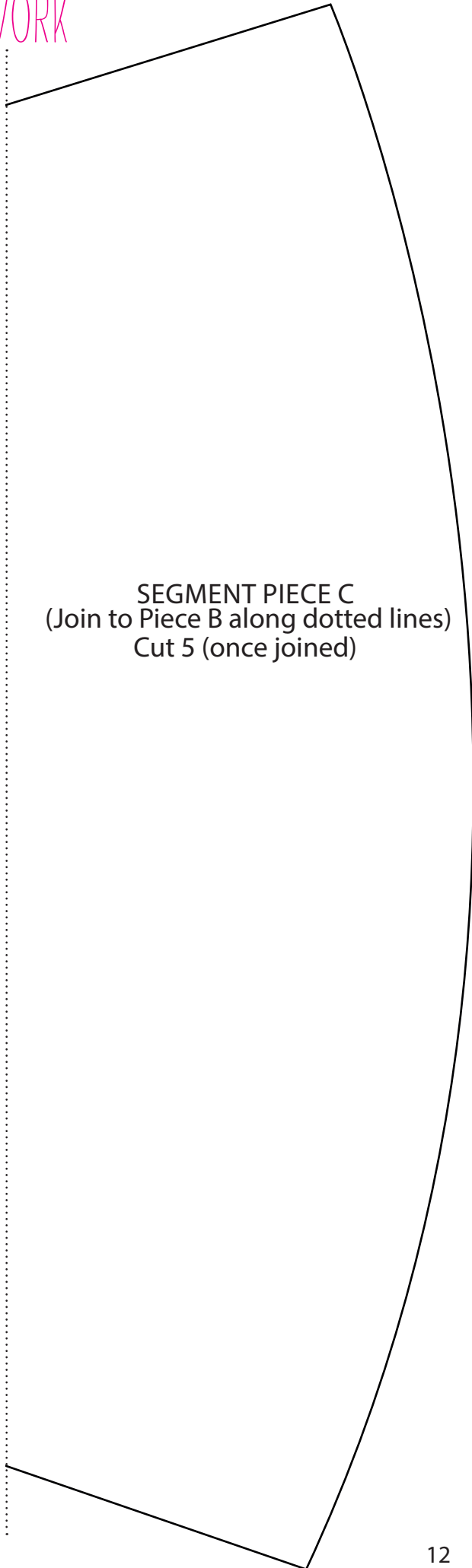
TEST SQUARE  
10x10cm



# PATCHWORK RUG

PAGE 27

ACTUAL SIZE

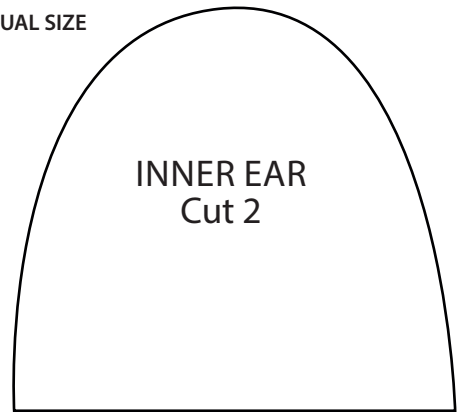


SEGMENT PIECE C  
(Join to Piece B along dotted lines)  
Cut 5 (once joined)

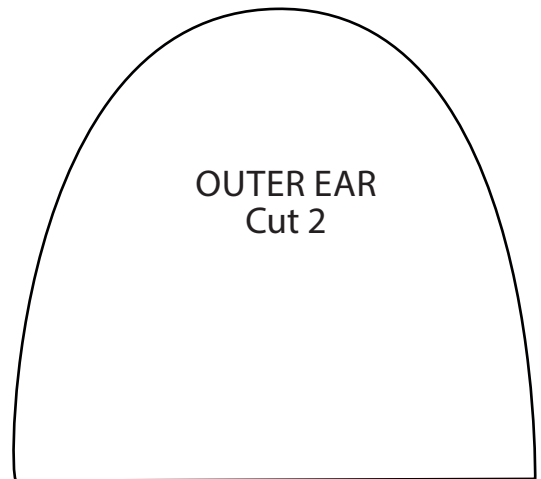
# HOODED TOWEL

PAGE 70

ACTUAL SIZE



INNER EAR  
Cut 2

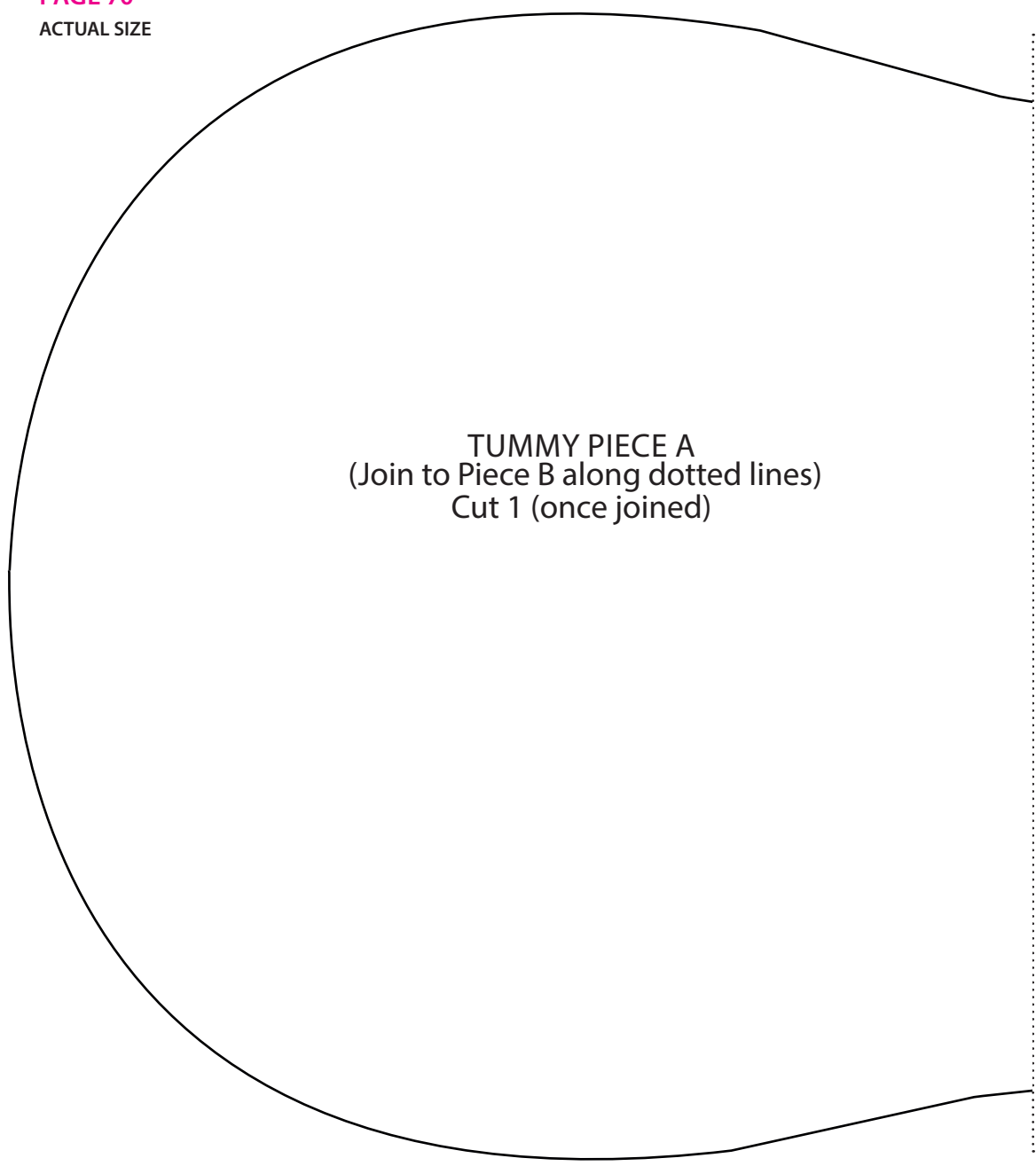


OUTER EAR  
Cut 2

# HOODED TOWEL

PAGE 70

ACTUAL SIZE

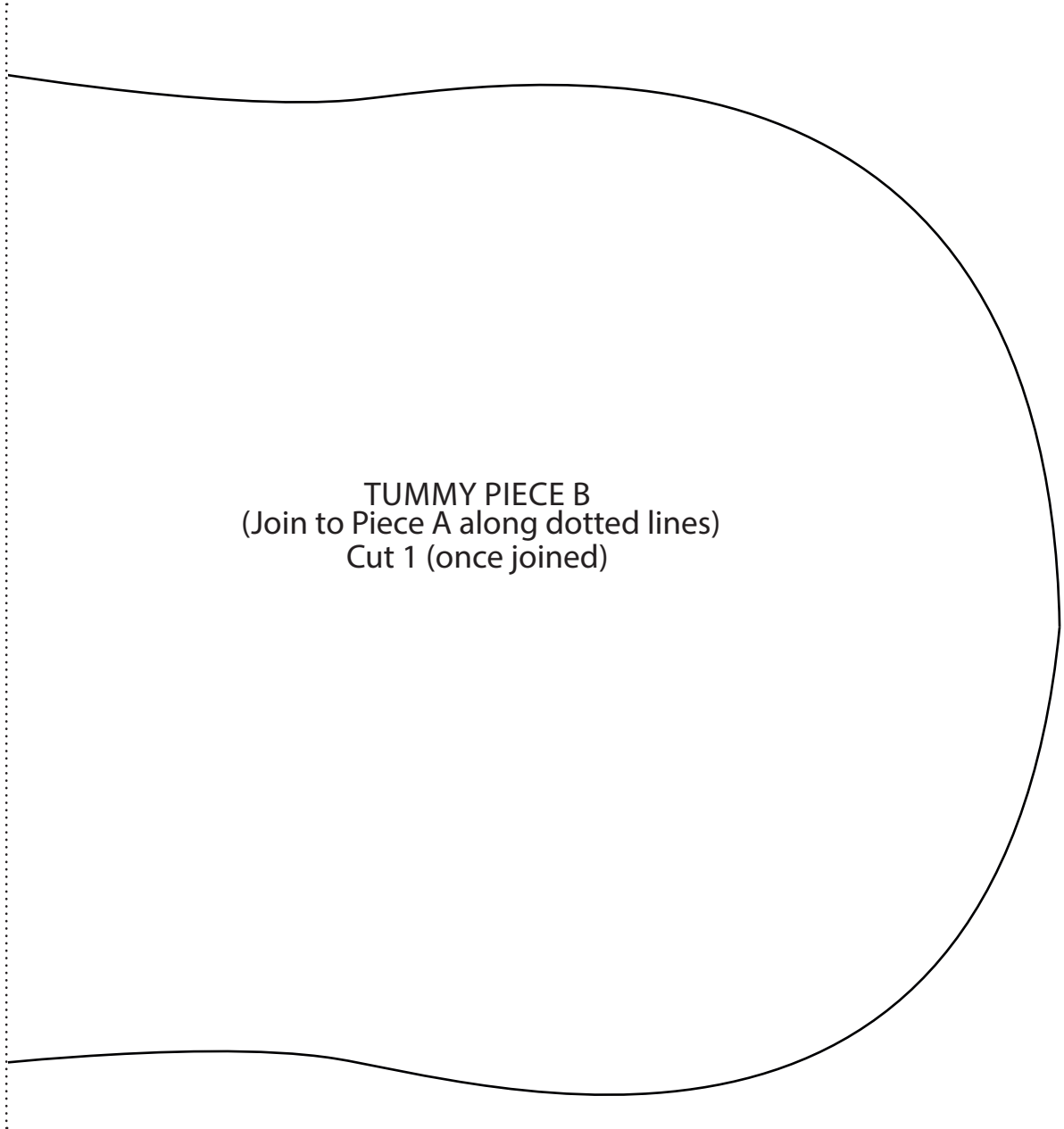


TUMMY PIECE A  
(Join to Piece B along dotted lines)  
Cut 1 (once joined)

# HOODED TOWEL

PAGE 70

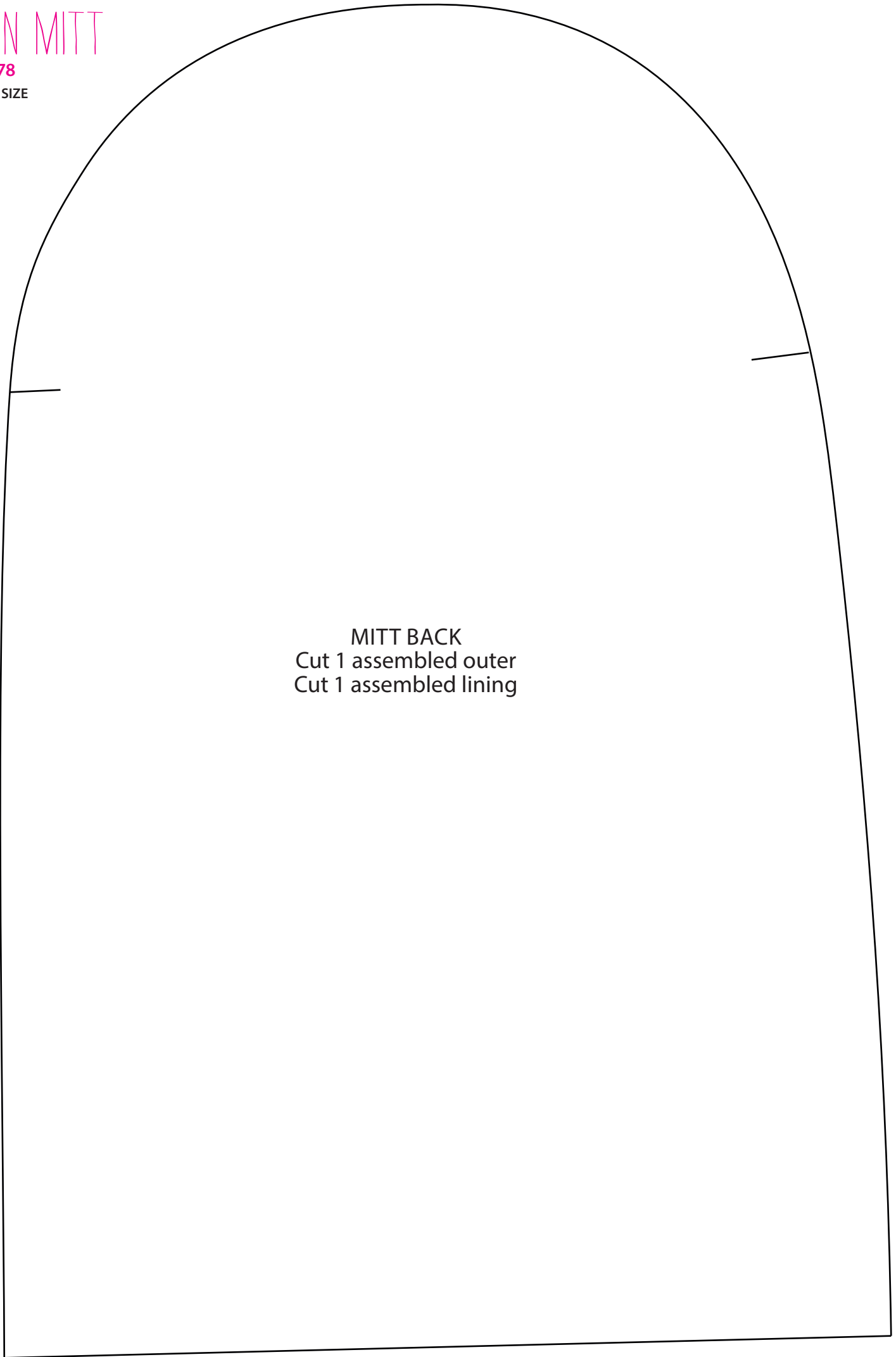
ACTUAL SIZE



# OVEN MITT

PAGE 78

ACTUAL SIZE

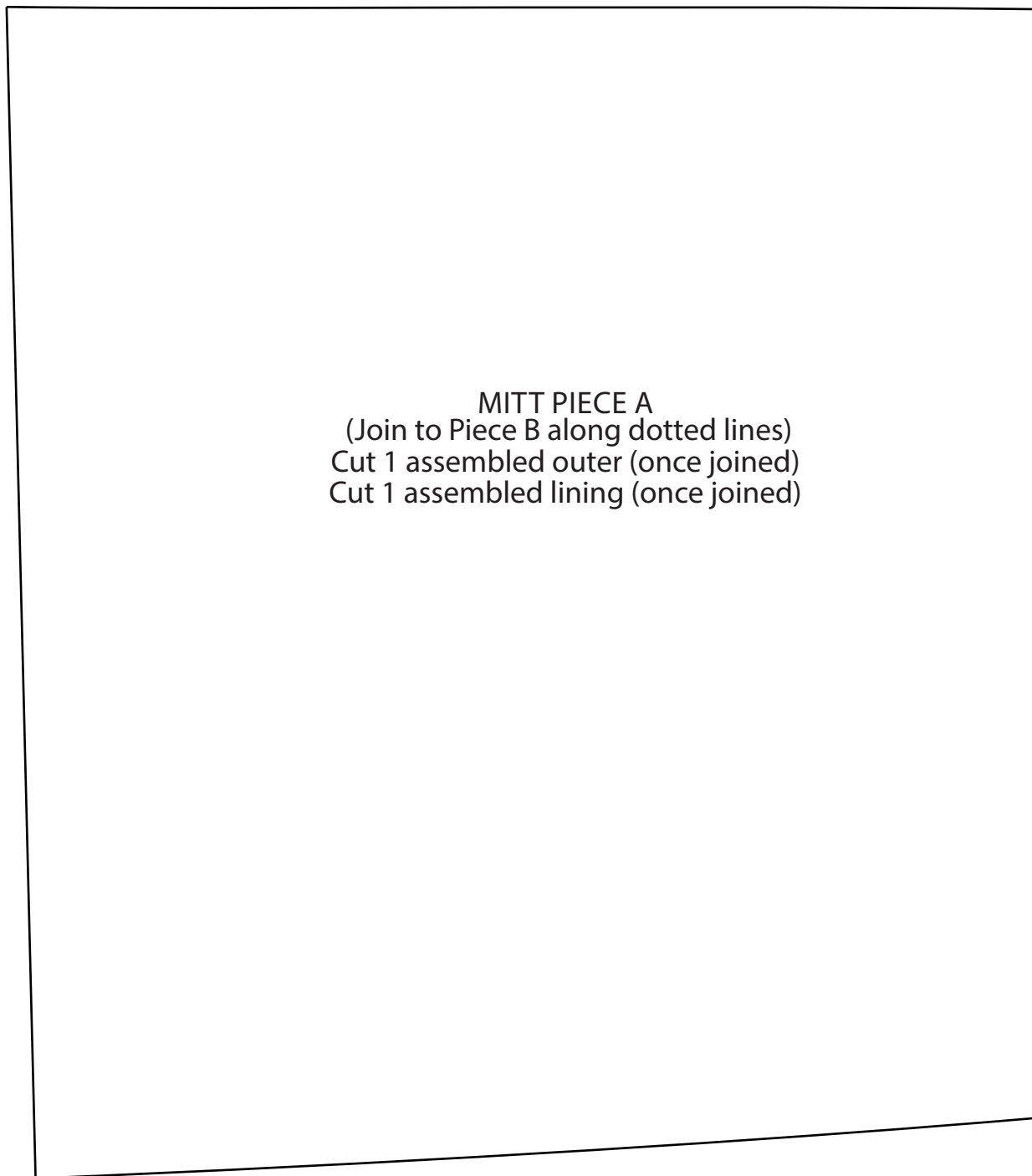


MITT BACK  
Cut 1 assembled outer  
Cut 1 assembled lining

# OVEN MITT

PAGE 78

ACTUAL SIZE

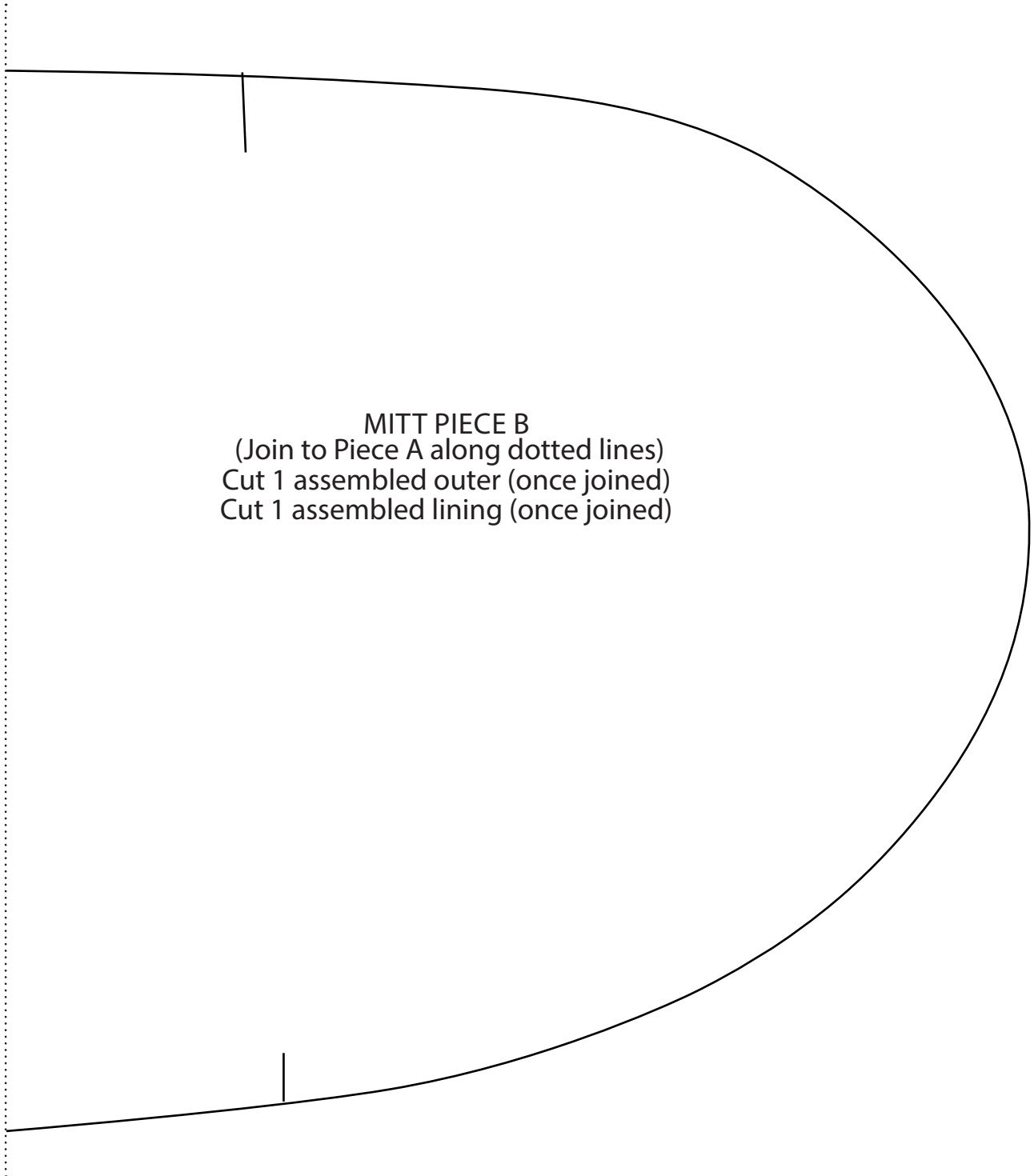




# OVEN MITT

PAGE 78

ACTUAL SIZE



# OVEN MITT

PAGE 78

ACTUAL SIZE

